



# eXcelon<sup>TM</sup> STYLUS

## Stylus Studio<sup>TM</sup>

Interactive Development Environment for XSLT and XML

eXcelon's industry-leading, award-winning Stylus Studio is an integrated development environment for creating, validating, and debugging XSL stylesheets, and XML-to-XML mappings. Used by over 20,000 developers worldwide, Stylus Studio delivers unprecedented productivity with visual editors, a graphical mapper, and its integrated XSLT, Java, and MSXML debugger with source-level debugging and back mapping.

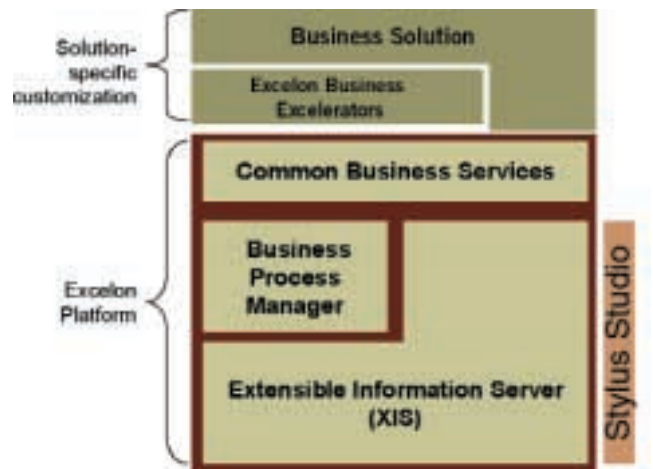
Stylus Studio is the only tool that supports XML developers from start to finish — from learning the standards to developing complex, distributed applications. Stylus Studio also complements eXcelon's eXtensible Information Server (XIS)<sup>TM</sup>, a robust and mature XML database management system that leverages XML's extensibility to simplify development and deployment without compromising performance, scalability, or reliability.

### Support for all Key XML Technologies:

eXcelon Stylus Studio is the most robust XML application development tool on the market today. One package contains all the XML tools you expect and provides support for the rest of your application development. Stylus Studio not only makes it easy to work with all XML information in your project but also lets you integrate XML resources with programming code.

eXcelon Stylus Studio provides support for all key XML technologies:

- Text and graphical editors for XML documents in any language encoding
- A visual XSLT editor, including the first integrated XSLT and Java Debugger, and a graphical XML-to-XML Mapper
- Integrated support for the XSL Formatting Object specification, including preview capabilities using Apache's FOP
- Visual editors for DTD and XML Schema documents, including validation
- An integrated XPath query engine and context sensitive XPath editing assistance



Stylus Studio tools are integrated with the eXcelon platform but can also be used as separately.

Stylus Studio also supports development with an integrated Java editor and provides wizards to automatically generate JSP pages and servlets. Thus, eXcelon Stylus Studio is a complete development environment for building and maintaining XML-based and Java applications. It is the one tool XML developers need.

## Comprehensive Suite of XML Tools

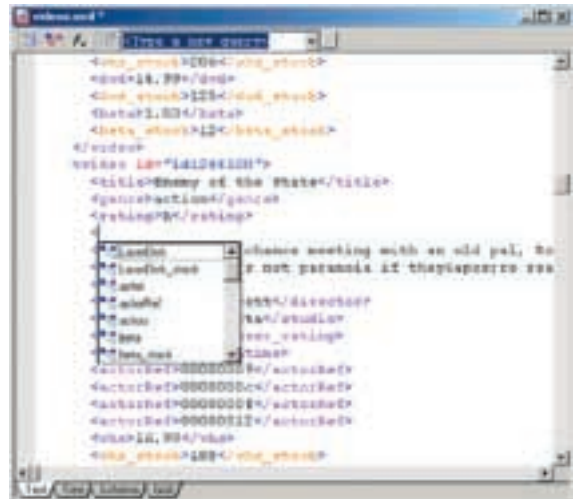
Stylus Studio complements eXcelon's eXtensible Information Server™ (XIS) a robust native XML database management system and Business Process Manager™ an XML based document rules engine that manages dynamic processes across the extended enterprise. eXcelon's XML products support XML natively to take advantage of truly extensible XML technology providing a flexible, scalable, and dependable environment for hosting XML-based applications. With the extensible Information Server™ and Business Process Manager™, you can easily build applications that integrate and manage information and business processes. As one of the cornerstones of this trio, Stylus Studio speeds development and eases maintenance of applications for reduced overall cost of ownership.

## Technical Components and Capabilities

StylusStudio consists of the following components:

### XML Editor

XML editor with Sense:X



eXcelon Stylus Studio lets you create and maintain XML documents in a variety of editing views including text, tree, and grid modes. The different views let you edit XML data in your preferred environment. All editing views help ensure XML documents are both well formed and valid according to specified DTD or XML Schema. Stylus Studio is built for scalable editing, allowing you to work on large documents several hundred megabytes in size without affecting performance.

In text mode, Stylus Studio Sense:X technology suggests valid tags according to the DTD or XML Schema and automatically inserts the necessary XML syntax to save on input time while ensuring a valid document.

## XSLT Editor

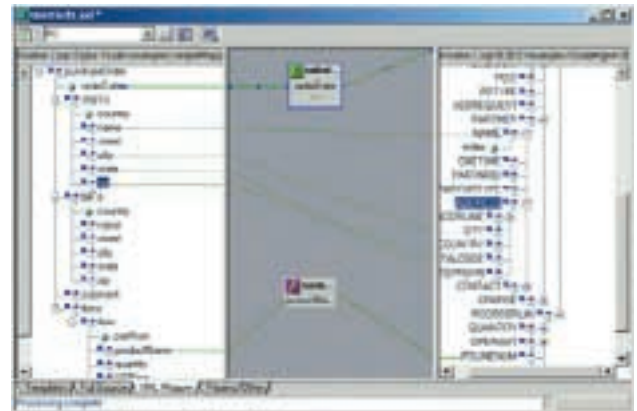
eXcelon Stylus Studio XSLT editor has built-in knowledge of all XSL instructions, including XSLT and XSL Formatting Objects and HTML tags to make creating XML-based applications fast and easy. Stylus Studio manages the collection of templates in your stylesheet and allows for easy navigation between them. Sense:X editing assistance makes it easy to create stylesheets and learn XSLT commands. Stylus Studio also provides an integrated preview window, so you can immediately see how changes will affect your stylesheet output.

With Stylus Studio, you can create and manage multiple scenarios for stylesheet execution, which facilitate the testing of stylesheets with multiple source documents, parameter values, and XSLT processors. In addition to the internal Stylus Studio processor, you can use third-party processors, such as Xalan and MSXML, with the integrated preview window.

eXcelon Stylus Studio supports the creation of stylesheets using Java extension functions for data transformation, computation, and integration with other applications. The Stylus Studio environment lets you directly edit Java code and debug extension functions as they are called from your stylesheet.

## XML-to-XML Mapper

When the need to convert XML information from one data format to another arises, eXcelon Stylus Studio XML-to-XML Mapper gives you a graphical, drag-and-drop editor to create these transformations. Based entirely on standard XSLT, the Stylus Studio XML-to-XML Mapper lets you interactively edit transformations using our graphical editor or powerful visual XSLT editor. As with all stylesheets created in Stylus Studio, you can use Java extension functions for data transformation, debug stylesheet execution to quickly find errors, and immediately preview the result of your stylesheet. The mapper supports transformations based on any DTD, XML Schema, or sample XML document.



**XML Mapper: interactively creates transformations**

## XSLT and Java Debugger

eXcelon Stylus Studio offers the most complete XSLT debugging solution available, with full support for Java extension functions. You can step through stylesheet execution line by line, place break points, watch variable values, and view a stack trace. Integrated Java debugging facilitates stepping from XSLT templates to Java code and back again.

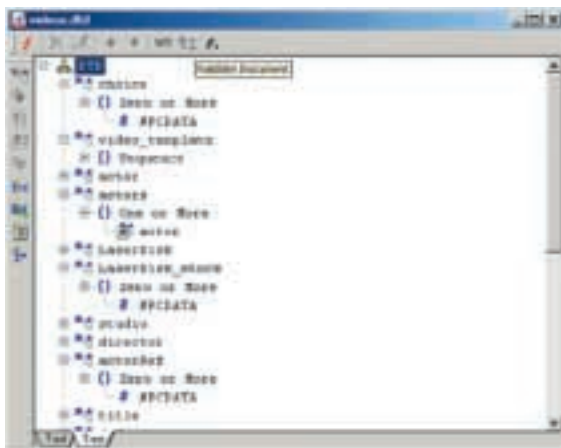
eXcelon Stylus Studio also supports “one-click” debugging that lets you jump from the stylesheet result (in text mode or as displayed in a Web browser) to the line of code that generated that output. This makes editing and debugging quick and easy.

In addition to editing features, eXcelon Stylus Studio allows you to easily build and run XPath queries against any XML document instance. As with stylesheets, you can immediately see the source of query data with a simple mouse click on the query results.

## XML Schema (DTD and XSD) Editing

eXcelon Stylus Studio gives you the ability to edit XML Schemas in either the DTD or XML Schema Definition (XSD) format. The visual schema editors let you create schemas quickly via our graphical interface.

Advanced developers can also take advantage of text mode schema editing, which includes Sense:X editing assistance, to ensure well-formed and correct schema documents.



Schema editing with Stylus Studio

## Document Wizards

eXcelon Stylus Studio lets you easily create both XML and XSLT documents from external sources. Document wizards include the ability to create a stylesheet from an existing HTML file, an XML file from any ADO data source, or from a DTD or XSD.

## Java Source Editing

For quick editing of Java extension functions used in XSLT or XML-to-XML mapping stylesheets, eXcelon Stylus Studio includes an integrated Java editor. As with all Stylus Studio editors, Sense:X editing assistance automatically completes Java functions as you type.

## Availability

eXcelon Stylus Studio is available as both a stand-alone product and as part of eXcelon's extensible information server (XIS)

To download a free, evaluation version please go to [www.exln.com](http://www.exln.com)

## Requirements

Stylus Studio requires a Pentium class PC with Windows NT, 2000, or XP.



**eXcelon™**  
[www.exln.com](http://www.exln.com)

**eXcelon Corporation**  
25 Mall Road  
Burlington, MA 01803  
USA  
Tel: 1.781.674.5000  
Fax: 1.781.674.5010  
Email: [info@exln.com](mailto:info@exln.com)

**eXcelon UK Limited**  
1015 Arlington Business Park  
Theale, Reading  
Berkshire RG7 4SA  
United Kingdom  
Tel: +44 (0) 118 930 1200  
Fax: +44 (0) 118 930 1201  
Email: [uk-info@exln.com](mailto:uk-info@exln.com)

**eXcelon Deutschland GmbH**  
Kreuzberger Ring 64  
65205 Wiesbaden  
Germany  
Tel: +49 (0) 611 977 1910  
Fax: +49 (0) 611 977 1918  
Email: [d-info@exln.com](mailto:d-info@exln.com)

**eXcelon Nederland b.v**  
Siriusdreef 17 - 27  
2132 WT Hoofddorp  
The Netherlands  
Tel: +31 (0) 23 568 9130  
Fax: +31 (0) 23 568 9491  
Email: [nl-info@exln.com](mailto:nl-info@exln.com)